

A Curated Exhibition

From January 23 to 27, the annual *LA Art Show* will take place at the Los Angeles Convention Center. On view will be thousands of works of art in gallery booths, ranging from contemporary to modern artwork among others. One of the mainstays of the show is Arcadia Contemporary, located in Pasadena, California, which for 2019 will feature a curated exhibition of artwork from new artists as well as recognized favorites.

On view in the gallery booth will be work by brand-new gallery artist **Loribelle Spirovski** of Australia, who will be making her premiere with approximately 25 paintings from her *Homme* series. According to Steve Diamant, owner of the gallery, “[S]he has developed this incredible technique of depicting what appear to be timeless ‘portraits’ that could have been of classic Hollywood actors and painting them in an incredibly contemporary manner.”

Spirovski says the *Homme* series “began

as a series of experimental studies on portraiture and has remained a sustained exploration into the human face/figure. Comprising both real and imagined subjects, the series has since blurred the lines of conventional masculinity and femininity, through its emphasis on the capacity of paint to convey emotion with minimal emphasis on naturalism.”

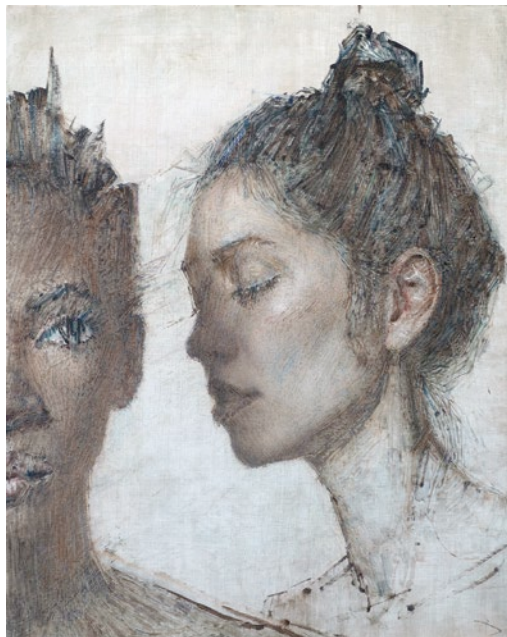
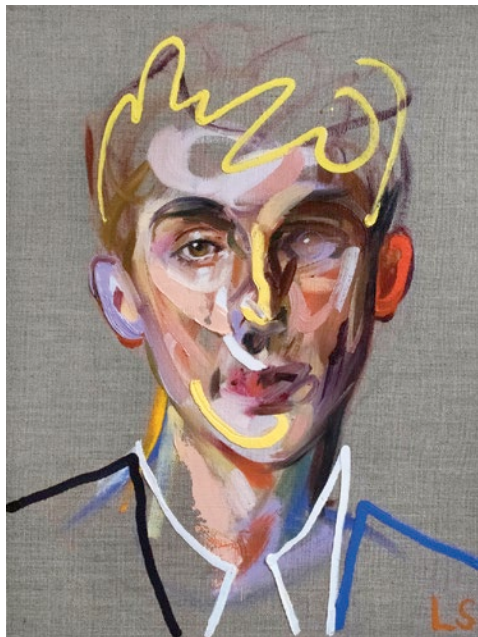
Works by Ukrainian painter **Denis Sarazhin** will also be found at the gallery’s booth. Sarazhin is known for his colorful portrayals of the human figure in a constant state of movement, with limbs splayed in various configurations. He explains the inspiration behind his work *All In One Shirt*, stating, “Sometimes human beings can lose the identity of who they really are. In one ‘I’ can be many personalities, and these personalities can be very opposite to each other.”

Los Angeles-based painter **Daniel**

Bilmes will premier extra-large portraits measuring 60 by 60 inches. The works are a sneak peek for his first solo show at Arcadia in April 2019.

There also will be new paintings by **Alex Russell Flint** on view, including *Hitching*, which depicts a woman with a bag at her feet standing at the edge of a roadway. Her body looks to be lit by approaching headlights, while her face remains obscured in the dark of night. “I’m inspired by ambiguity. Things are not always as they seem,” he says. “I like to create jarring images which leave the viewer with an uneasy feeling, that question one’s initial presumptions around guilt and innocence, strength and vulnerability. Is it a perfectly plausible scene or is there something darker going on?” ●

Arcadia Contemporary 39 E. Colorado Boulevard • Pasadena, CA 91105 • (626) 486-2018 • www.arcadiacontemporary.com





3

1
Loribelle Spirovski,
Homme No. 102,
oil on canvas, 16 x 12"

2
Daniel Bilmes, *Secret*,
oil on canvas, 20 x 16"

3
Denis Sarazhin,
All In One Shirt, oil on
canvas, 59½ x 59½"

4
Alex Russell Flint,
Hitching, oil on canvas,
22½ x 44"



4